

Profile

M.T.C. Planning and Design is a newly formed company that trades as Architects, Town Planners, and Building Surveyors. It is a company incorporated in England and Wales.

M.T.C. Planning and Design is a small scale practise with 5 no. staff which includes 2 no. Architects, 2 no. Architectural technologists, Admin staff, and a Town Planner (Roger Tweedale being both a chartered Architect and Town Planner). The current staff provides a range of youth and experienced workers.

Established in 2011 by Roger Tweedale and Rowan Chislett, MTC Planning and Design originate from the recently ceased trading company Turnbull Tweedale. Turnbull Tweedale was formerly known as Bloomer Tweedale, which traded as Alex Gordon Tweedale up until 1997. Parallel to the formation of Turnbull Tweedale associates companies; Tweedale (Wolverhampton) Limited and Bywater Tweedale Limited, were established in the West Midlands and Cumbria. All three companies included Roger Tweedale as key shareholder and Director.

The aim of M.T.C. is to create a practice, based on a strong wide ranging professional experience that centres on the clients needs whilst reacting to the constantly changing needs of the construction industry. MTC's success has been its diversified client base, (large and small scale, both urban and rural) and an ability through its Town Planning Section to provide expert advice.

M.T.C. offers architectural design, building surveying, town planning, and associated services for all stages of the development process, from inception to occupation. We also provide detailed advice on matters relating to planning and building regulations, design for disabled access, health and safety matters, and construction contract procurement/administration. This will enable us to develop and deliver a number of imaginative projects successfully to budget and timescale for both private and public sector clients.

Ethos

M.T.C. specialise in providing architectural, town planning, urban design, surveying of buildings, and project management services to all sectors of the community. Through detailed and thorough design processes, we seek to enable all of our clients to realise the potential of developing buildings in an increasingly progressive environment

Resources

M.T.C. understands the need to maintain up-to-date technology for efficient production of information, not only for speed of producing information but also as a responsibility to share and inter-link with other members of design teams when developing large scale, complex projects. However all our design work originates from traditional hand sketch work, enabling freedom of expression in design and ideas.

M.T.C. operate AutoCAD 2007 (L), Sketchup version 5, and numerous Photoshop software. High-level presentations can be made either in 2D drawings, or 3D modelling Where required and deemed appropriate M.T.C. still present hand drawn presentations and 3D perspectives.

M.T.C. has agreements in place to ensure IT back up in the unlikely event of technological breakdowns. Currently all office administration is run through Microsoft Office 2003 software.

Environment

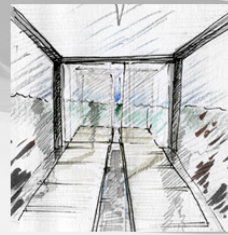
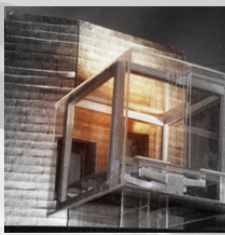
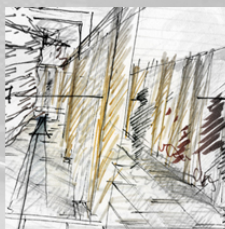
M.T.C. do not have set environmental policies. Instead the concept of sustainable and environmentally responsible design has been integral to all our designs since our inception. We are committed to producing architecture that not only reduces impact on our surroundings and the environment, but also becomes sustainable in the long term for end users. We are constantly researching in the quest for improved environmental design and actively participate in relevant tutorials, lectures, and seminars on such topics.

The Team



company statement

“MTC Planning and Design specialise in providing architectural, town planning, urban design, building surveying, and project management services to all sectors of the community. Through detailed and thorough design processes, we seek to enable all of our clients to realise the potential of developing buildings in an increasingly progressive environment.”



mtc
planning and design
architects
town planners
building surveyors

Barn 5a
Sutton Hall Farm
Sutton Maddock
Shropshire
TF11 9NQ
Tel 01952 730 492/863 Fax 01952 730 492

Other Brochures



Health and Safety

The directors wish to pursue a policy to promote health and safety at work and seek the co-operation of all employees for that purpose. The company will provide working conditions which comply with the relevant statutory requirements and officially approved codes of practice that are designed to ensure good standards of health and safety.

Particular regard will be paid to:

Providing information, instruction, training and supervision to enable all employees to contribute positively to their own health and safety at work.

Electrical equipment and systems of work to ensure that they are safe and do not endanger health.

Providing safe arrangements for the storage, handling and movement of materials and substances.

Providing welfare facilities and benefits as far as is reasonably practicable, accepting responsibility for the health and safety of other people who may be affected by our activities.

Providing safe means of access to and egress from places of work which are under the company's control.

Carrying out risk assessments appropriate for the company's needs.

Although the company operates in an environment that is low risk, injuries and illness can happen in any circumstances and it is the board of directors' objective to reduce the incidence of these to an absolute minimum, not merely in keeping with, but surpassing, the best experience in other similar organisations.

The allocation of duties for safety matters and the particular arrangements which the company will make to implement the policy are set out in the health and safety company manual.

The policy will be kept up to date, particularly as the business changes in nature and size. To ensure this, the policy and the way in which it operates will be reviewed every year.

Equal Opportunities

M.T.C. ensures that no job applicant or employee receives less favourable treatment on the grounds of sex, race, colour, nationality, ethnic, or national origin, disability, marital status, sexual orientation, responsibility for dependents, age, any political activities, religious beliefs, spent offences, or is disadvantaged by any conditions/requirements which cannot be shown to be justified.

All of the above applies to selection, training, promotion, pay, and terms/conditions of employment.

Working Relationships

M.T.C. has a working relationship with C.T. Design Environmental, a firm of environmental code assessors.

Currently in Wales, and soon in England, all new dwellings will require pre-application Code for Sustainable Homes assessments as part of any Planning Application



The images illustrated in this brochure, and within the other M.T.C. Planning and Design presentation material include projects of the former business Turnbull Tweedale and Quest Partnership. All works were either concept designed, detailed designed, or over-seen at construction stage by staff now employed by M.T.C.

Planning and Design

Our process of design incorporates in-depth consideration of client requirements, of design team selection, consideration of the physical and legal constraints, and the application of skilled architectural design to maximise the opportunity to achieve buildings that are efficient in operation, economical in use and give pleasure to occupants, whilst being delivered on time and within budget.

Town and Country Planning

We offer cost effective services to public and private clients aiming to maximise the potential of any development and addressing the many complex technical and environmental issues to be overcome on most projects.

We have specialised knowledge in a wide range of areas and our Development Plan monitoring service covers most of mainland Britain. We have direct access to the Planning Bars.

Our Services include

- Environmental impact studies
- Listed building advice
- Planning applications and negotiation
- Policy formulation and analysis
- Project co-ordination/management
- Comprehensive redevelopment projects
- Retail impact studies
- Section 106/52 and other legal agreements
- Simplified planning zones
- Site Investigation and advice
- Strategic planning
- Tourism
- Urban regeneration and design

Project Management

We can provide services on any building related issues from condition surveys, defect investigation and remedy through to expert witness in any dispute proceedings.

A wide range of Project Management services can be provided to clients in both public and private sectors. We aim to provide value for money on all assignments and ensure that time, cost and quality are continuously controlled, administered and well documented with the client being kept informed at all times.

Training and Associations

M.T.C. is proud to be committed to, and abide by the rules of, the following associations:

RIBA: Royal Institute of British Architects.

ARB: Architects Registration Board.

RTPI: The Royal Town Planning Institute

CIAT: Chartered Institute of Architectural Technologists

All of the above associations include Codes of Conduct stipulating the need for Continued Professional Development (CPD). MTC Planning and Design recognises the need to continually self improve to maintain a service that is both professional and coherent with contemporary legislation/design requirements.

